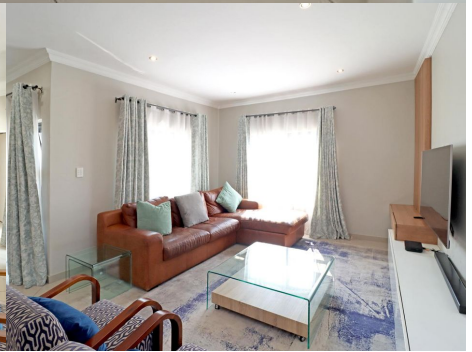


# 3951B

## Hammerkop Street



### Marina Combrinck

Assistant

078 022 0921  
marina@lwp.co.za

### Claire Gooderham

Candidate Property Practitioner

083 676 4934  
claire@lwp.co.za

# LWP

PROPERTIES

WEB REF: RL4957

ERF SIZE: 600m<sup>2</sup>

FLOOR SIZE: 250m<sup>2</sup>

RATES AND TAXES: R2,400

LEVIES: R850



## A MASTERPIECE OF MODERN LUXURY IN THATCHFIELD HILLS ESTATE

# R3,849,000

Step into this 4-bedroom, 4.5-bathroom residence where timeless sophistication and family comfort converge in perfect harmony.

Located in the prestigious Thatchfield Hills Estate, this architectural gem offers an exclusive sanctuary for the discerning family — blending space, security, and refined design into a lifestyle of effortless elegance.

From the moment you enter, you're greeted by expansive open-plan interiors, high-end finishes, and seamless connections between the living, dining, and entertainment spaces. Natural light flows throughout, creating an ambience that is both inviting and contemporary.

The gourmet kitchen, complete with a central island and hidden scullery, is a culinary showpiece designed for both family living and grand entertaining. Each bedroom has been curated as a private retreat with its own en-suite bathroom, while the lavish main suite elevates the experience with a spa-inspired bathroom and walk-in closet.

Designed for modern lifestyles, this home also features a dedicated office for productivity, staff quarters for convenience, and a double automated garage for effortless living.

This exclusive residence includes:

- Architect-designed open-plan living with elegant, modern finishes
- 4 spacious on-suite bedrooms, each a private sanctuary
- Gourmet chef's kitchen with scullery and premium appliances
- Private home office where ambition meets style
- Dedicated staff quarters for ultimate convenience
- Double automated garage with secure estate access
- Landscaped garden offering serene outdoor living
- Full access to Thatchfield Hill's 24/7 security and manicured communal spaces