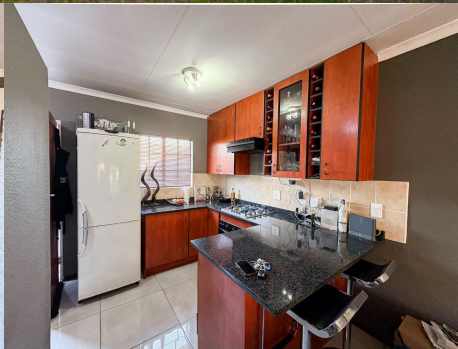


553

Office Park Road
Murati Place



Kacy B Bezuidenhout

Candidate Property Practitioner
Registered with PPRA

076 411 2672
kacy@lwp.co.za

Barry Scott-Brown

Non-Principal Property
Practitioner
Registered with PPRA

082 777 2552
barry@lwp.co.za

LWP
PROPERTIES

INVITING BUYERS BETWEEN R899 000 - R1 150 000 TO COME VIEW AND NEGOTIATE!!!!

WEB REF: RL4863

R1,150,000

ERF SIZE: 81m²

FLOOR SIZE: 81m²

RATES AND TAXES: R695

LEVIES: R1,504



2



1.5



1

Modern 2-Bedroom, 1.5-Bath Townhouse in Halfway Gardens – Perfect for First-Time Buyers, Small Families, and Investors!

Welcome to this charming and well-appointed townhouse nestled in the heart of Halfway Gardens. Whether you're a first-time buyer, a growing family, or an investor looking for a solid opportunity, this property ticks all the right boxes.

As you enter, you're welcomed by a spacious open-plan living and dining area with new tiling and fresh paint—perfect for relaxing or entertaining guests. The space flows seamlessly into a stylish kitchen, recently upgraded with brand-new cupboards and sleek granite countertops, offering both functionality and modern appeal.

Both bedrooms are generously sized and come with ample built-in cupboards, ensuring plenty of storage space. The full bathroom features a bath and shower, while a convenient guest loo adds extra practicality for everyday living.

Step outside to a cozy private patio, complete with a braai area—ideal for weekend gatherings or quiet evenings at home.

The complex offers peace of mind with 24-hour security, making it a safe and secure environment for you and your loved ones.

HURRY!! Don't miss out on the opportunity to make this gem in a prime location, close to schools, shopping centers, and major transport routes, your new home!

Contact us today to arrange a viewing!

Whilst every care has been taken in the preparation of this listing, we cannot be held responsible for any errors or omissions that may occur.

