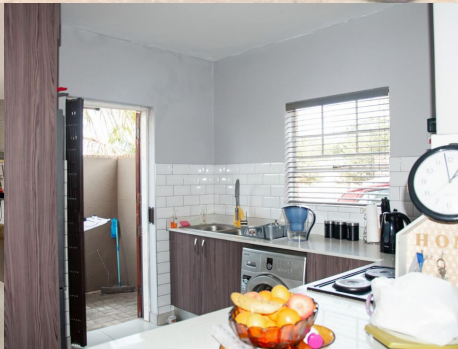
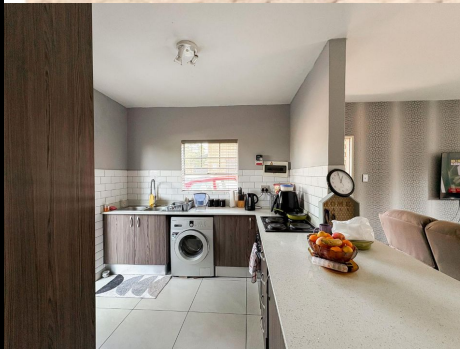


553

Office Park Road *Murati Place*



Kacy B Bezuidenhout

Candidate Property Practitioner
Registered with PPRA

076 411 2672
kacy@lwp.co.za

Barry Scott-Brown

Non-Principal Property
Practitioner
Registered with PPRA

082 777 2552
barry@lwp.co.za

LWP

PROPERTIES

WEB REF: RL4971

ERF SIZE: 93m²

FLOOR SIZE: 93m²

RATES AND TAXES: R1,083

LEVIES: R1,646



2



1.5



2

CHARMING 2-BED, 1.5-BATH TOWNHOUSE OFFERING COMFORT, CONVENIENCE & SECURE LIVING.

R1,100,000

As you step inside, you're greeted by a light-filled open-plan living and dining area that flows seamlessly onto your private patio – perfect for entertaining or enjoying a quiet evening outdoors. The spacious kitchen boasts ample cupboard and countertop space, making it both practical and stylish. A convenient guest loo is located downstairs.

Upstairs, you'll find two well-appointed bedrooms and a full bathroom, complete with both a shower and bathtub.

The home also features two garages, with additional driveway space to accommodate two more cars.

Ideally located close to shopping centres, main roads, and schools, this property offers an excellent balance of lifestyle and accessibility. The secure complex provides peace of mind with 24-hour security.

This is the perfect home for first-time buyers, small families, or those looking to downsize without compromising on space and convenience.

Hurry!! Don't miss out on the opportunity to make this beautiful home yours! Contact me now to arrange a viewing.

Whilst every care has been taken in the preparation of this listing, we cannot be held responsible for any errors or omissions which may occur.

