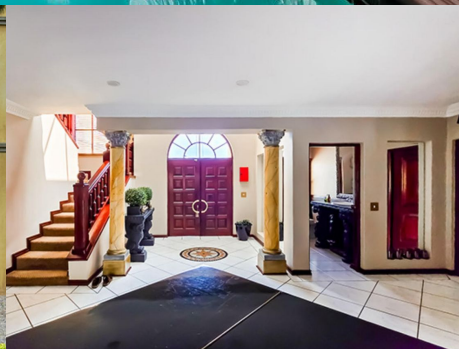
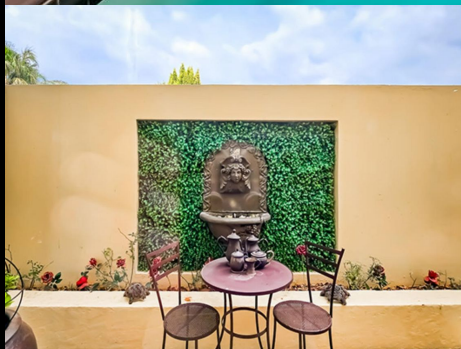


12

Saint-Cloud Street



Aspen Sanders

Non-Principal Property
Practitioner
Registered with PPRA

083 210 9488
aspen@lwp.co.za

Barry Scott-Brown

Non-Principal Property
Practitioner
Registered with PPRA

082 777 2552
barry@lwp.co.za

LWP
PROPERTIES

WEB REF: RL4797

ERF SIZE: 1,535m²

FLOOR SIZE: 650m²

RATES AND TAXES: R4,056

LEVIES: R3,100



5



4.5



3



WELCOME HOME TO THIS CLASSICAL GEORGIAN BEAUTY!

R6,995,000

With amazing street appeal, ample parking space, feature chandeliers and bespoke fittings, this home offers the avid entertainer everything and more.

The double volume entrance flows through to the custom built bar boasting a feature Baby Grand Piano and various reception rooms. A generous family lounge/home theatre room enjoys a gas fireplace and stacking windows overlooking the koi pond. The study with wood panelled walls and French doors opening to a private courtyard makes a wonderful work from home office. The magnificent lounge and entertainment area flows seamlessly through glass stacking doors to the inviting pool, beautifully manicured garden and a golf putting green. An additional undercover patio on the far end of the pool could be utilised as an outdoor bar or gym. The open plan kitchen boasts granite counter tops, a 5 plate gas hob, 2 integrated fridges and freezers and a spacious separate scullery. A lovely feature in this family kitchen is a built in lounge area which flows through to the gorgeous dining room with French doors opening onto a private conservatory and garden.

A separate guest toilet completes the downstairs of this stunning home.

Upstairs you will enjoy 5 spacious bedrooms, 3 of which are en-suite. All the bedrooms have ceiling fans and built in cupboards. 2 of the bedrooms share a full bathroom and have stacking windows with views of the garden, aswell as additional space for a pyjama lounge or study area. The master suite has a stylish walk in wardrobe, en-suite bathroom, built in fireplace and a private balcony overlooking the garden. Another huge bonus in this gorgeous home is the 60sqm guest suite with bathroom, jacuzzi room, lounge area and space for a kitchenette. This could easily be utilised as a flat or an impressive work from home office.

Additional features include staff accommodation and 3 automated garages.

Whilst every care has been taken in the preparation of this listing, we cannot be held responsible for any errors/ omissions which may occur.