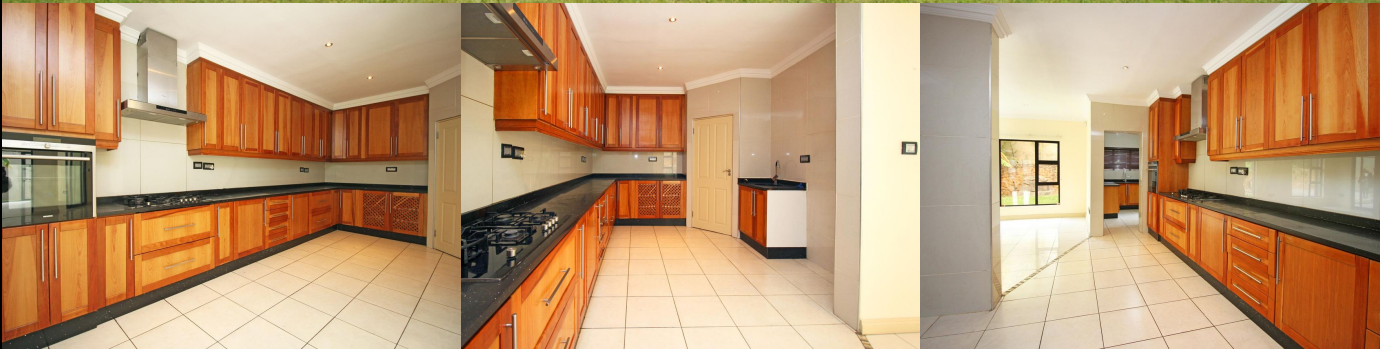


16

Fisheagle Crescent



Adelaide Ruwisi

Candidate Property Practitioner
Registered with PPRA

072 488 0073
adelaide@lwp.co.za

Barry Scott-Brown

Non-Principal Property
Practitioner
Registered with PPRA

082 777 2552
barry@lwp.co.za

LWP
PROPERTIES

STUNNING VIEWS UNFOLD BEFORE YOUR EYES

WEB REF: RL4886

R3,599,000

ERF SIZE: 591m²

FLOOR SIZE: 366m²

RATES AND TAXES: R2,434

LEVIES: R2,450



5



2.5



2

Proudly poised high on one of the elevated avenues in Kyalami Glen, this stunning home claims the perfect vantage to revel in magical views across Kyalami Race Track, parts of Waterfall and Barbeque Downs!!!!

The stylish home boasts modern finishes and an abundance of natural light that dances through the generous windows. Take pleasure in the harmonious living spaces that are aligned with natural energies, creating an environment of peace and serenity. Nestled in a vibrant community, this house is your gateway to a dynamic lifestyle, complete with communal which include parks, sports facilities and a clubhouse.

Downstairs

- Entry foyer
- Sunny formal Lounge
- Casual family/living area inter-leading to the open plan dining room and kitchen
- Study/ prayer room
- Gorgeous modern kitchen adorned with bespoke surfaces, built-in gas hob, electric oven and microwave; generous walk-in pantry, separate scullery and laundry areas
- Patio framed with aluminium stack doors
- Spacious Staff quarters
- Powder room for added convenience

Upstairs

- Main suite has wide windows with pool and garden view; stunning bathroom with a jacuzzi bath; separate walk-in dressing room
- Three spacious bedrooms share a full bathroom
- Additional room that can be converted to an office, bedroom or games room.
- Engineered wood flooring in bedrooms

Garden

- lots of fruit trees, which include papaya, pomegranate, banana, peach, guava
- 6m (l) x 3m (w) x 1.7m(d) salt chlorinated solar heated pool
- External bathroom with shower
- Full irrigation

