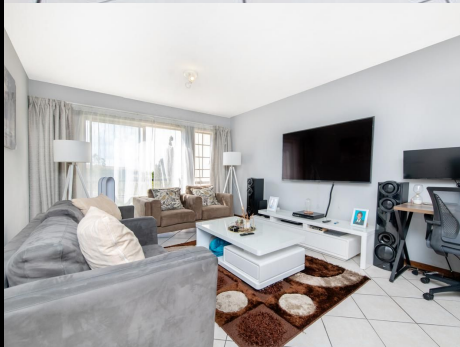


2

Wagner Lane *Crescendo*



Karabo Molefe

Candidate Property Practitioner

083 243 4369
karabo@lwp.co.za

Barry Scott-Brown

Non-Principal Property
Practitioner
Registered with PPRA

082 777 2552
barry@lwp.co.za

LWP
PROPERTIES

CALLING ALL FIRST-TIME BUYERS, YOUNG FAMILIES AND INVESTORS!

WEB REF: RL3871

R720,000

ERF SIZE: 71m²

FLOOR SIZE: 71m²

RATES AND TAXES: R1,103

LEVIES: R1,669



2



1

Inviting buyers from R620,000 to R720,000 to come, view and negotiate.

You will not find a bargain like this again in such a prime location. This north-facing fully tiled apartment offers an open plan living/dining set up, 2 generously spaced bedrooms and a full bathroom. It has a modern kitchen with space for an under-counter appliance and plenty of cupboard space.

This stunning home offers a single lock-up garage and is perfectly located close to all amenities. The complex has excellent 24-hour access controlled security, a swimming pool, kid's play area, braai area, and a clubhouse. It's fantastic rental history, makes this property an investor's delight.

Thinking of residing in a prime neighborhood or making a sound investment, then you can't go wrong buying in this location.

Whilst every care has been taken in the preparation of this listing, we cannot be held responsible for any errors or omissions which may occur.

