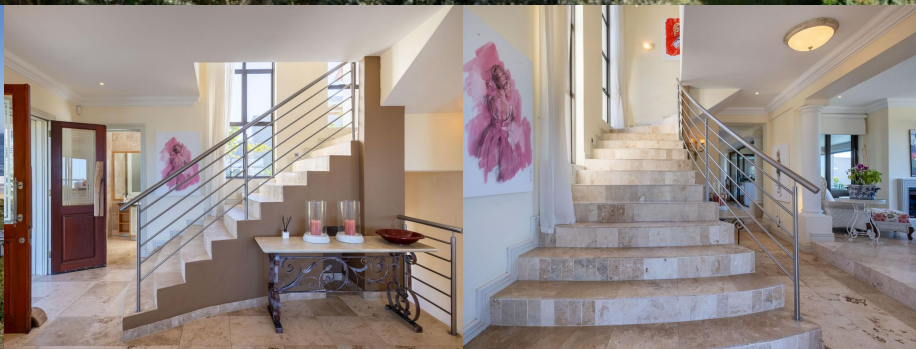


# 3955

## Aquarius Close



### Helen Ward

Non-Principal Property  
Practitioner  
Registered with PPRA

083 309 9759

[helen@helenmelonproperties.co.za](mailto:helen@helenmelonproperties.co.za)

### Barry Scott-Brown

Non-Principal Property  
Practitioner  
Registered with PPRA

082 777 2552

[barry@lwp.co.za](mailto:barry@lwp.co.za)

# LWP

PROPERTIES

## LUXURIOUS FAMILY HOME WITH STUNNING OCEAN VIEWS.

WEB REF: RL4836

# R19,500,000

ERF SIZE: 893m<sup>2</sup>

RATES AND TAXES: R4,937



6



6.5



4



Set over two levels, this beautifully designed five-bedroom home is a must-see. Spectacular views of breaking waves, the ocean and Robberg Peninsula can be enjoyed from throughout the home.

Every aspect of this lovely home is designed to provide comfort, elegance, and connection to its stunning natural surroundings. High ceilings, an abundance of natural light, and seamless indoor-outdoor living set the tone.

In walking distance of Plettenberg Bay's exclusive Solar and Sanctuary beaches, this home offers the epitome of coastal living. Quiet and private it is located at the end of a cul-de-sac. Seldom do properties in this highly sought-after area come onto the market as they are passed down through generations.

Enjoy magic sunrises, the sight of pods of dolphins surfing the waves, whales breaching, walkers, dogs, and children enjoying the beach all from the privacy and comfort of your sun-drenched deck.

The infinity pool gives the illusion of flowing seamlessly into the breaking waves.

Exceptional Family Residence with Ocean and Mountain Views.

The home has top-of-the-range finishes throughout, with Travertine floors in all the entertainment areas and vinyl flooring in the bedrooms.

The house comprises five en-suite bedrooms, open plan TV/kitchen, dining room, living room, an enclosed patio with a built-in braai, gym/study, guest cloakroom, four garages as well as a separate one-bedroomed flat with a private entrance.

The formal lounge, dining room and open plan TV/kitchen all open onto the patio. The kitchen boasts granite countertops, double oven, a prep bowl and large walk-in pantry. The scullery offers practicality with space for three appliances and direct access to the north-facing drying yard.

The outdoor living space is ideal for family time and relaxing in the sunshine, enjoying mesmerising views, and fun times around the braai and pool.