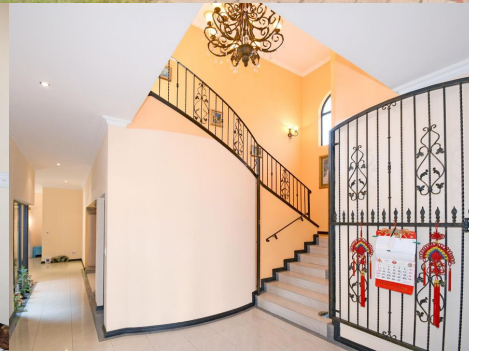
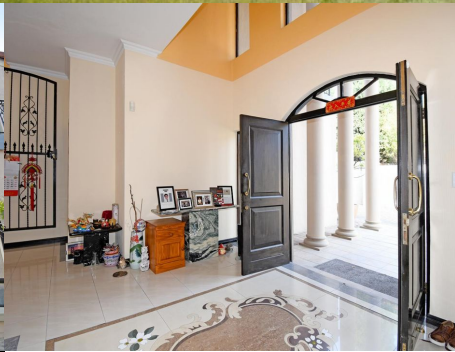


47

Mulborton Road, Beverley *Tanneburg Estate*



Claire Gooderham

Candidate Property Practitioner

083 676 4934
claire@lwp.co.za

Mike Whitten

Candidate Property Practitioner
Registered with PPRA

083 796 0261
mike@lwp.co.za

LWP

PROPERTIES

WEB REF: RL4928

ERF SIZE: 1,096m²

FLOOR SIZE: 658m²

RATES AND TAXES: R4,900

LEVIES: R3,500



6



4.5



3



RARE FIND IN BEVERLEY – YOUR DREAM TOWNHOUSE AWAITS

R5,894,999

Looking for an Exceptional Property in the Highly Sought-After Beverley Area?

Your search ends here! This one-of-a-kind home offers a rare opportunity in an exclusive estate where properties seldom come on the market. Priced to sell, it stands out from others in its range with features and space that truly impress.

Set on a corner stand, the property boasts excellent security with perimeter estate electric fencing as well as your own additional electric fence. The long driveway provides parking for up to six vehicles, with ample space for guests.

Inside, the home offers six bedrooms, air conditioning, underfloor heating, and a host of other standout features, making it a perfect combination of comfort, luxury, and functionality.

Sunlight pours in from large windows throughout, complemented by soaring 3-meter-high ceilings that create a bright, airy atmosphere.

Ground Level:

Step into a grand entrance hall featuring a striking staircase and an impressive chandelier. The lower level includes a guest bedroom, study, and a private living room, all with expansive atrium windows. The open-plan dining room easily accommodates a 12-seater table or larger, while the family TV room flows seamlessly to a chef's dream kitchen with a central island, ample preparation space, a large walk-in pantry, and a separate scullery/laundry area.

Outdoor Living:

A covered patio overlooks a beautifully landscaped wrap-around garden with distinct sections and a built-in braai area – perfect for entertaining family and friends. A feature atrium adds a touch of architectural elegance to the outdoor space.

Upstairs:

The upper level houses five bedrooms, four of which share two well-appointed bathrooms. The master suite occupies its own wing and offers a private balcony, lounge area, walk-in cupboard, en-suite bathroom, and separate study – a true sanctuary.