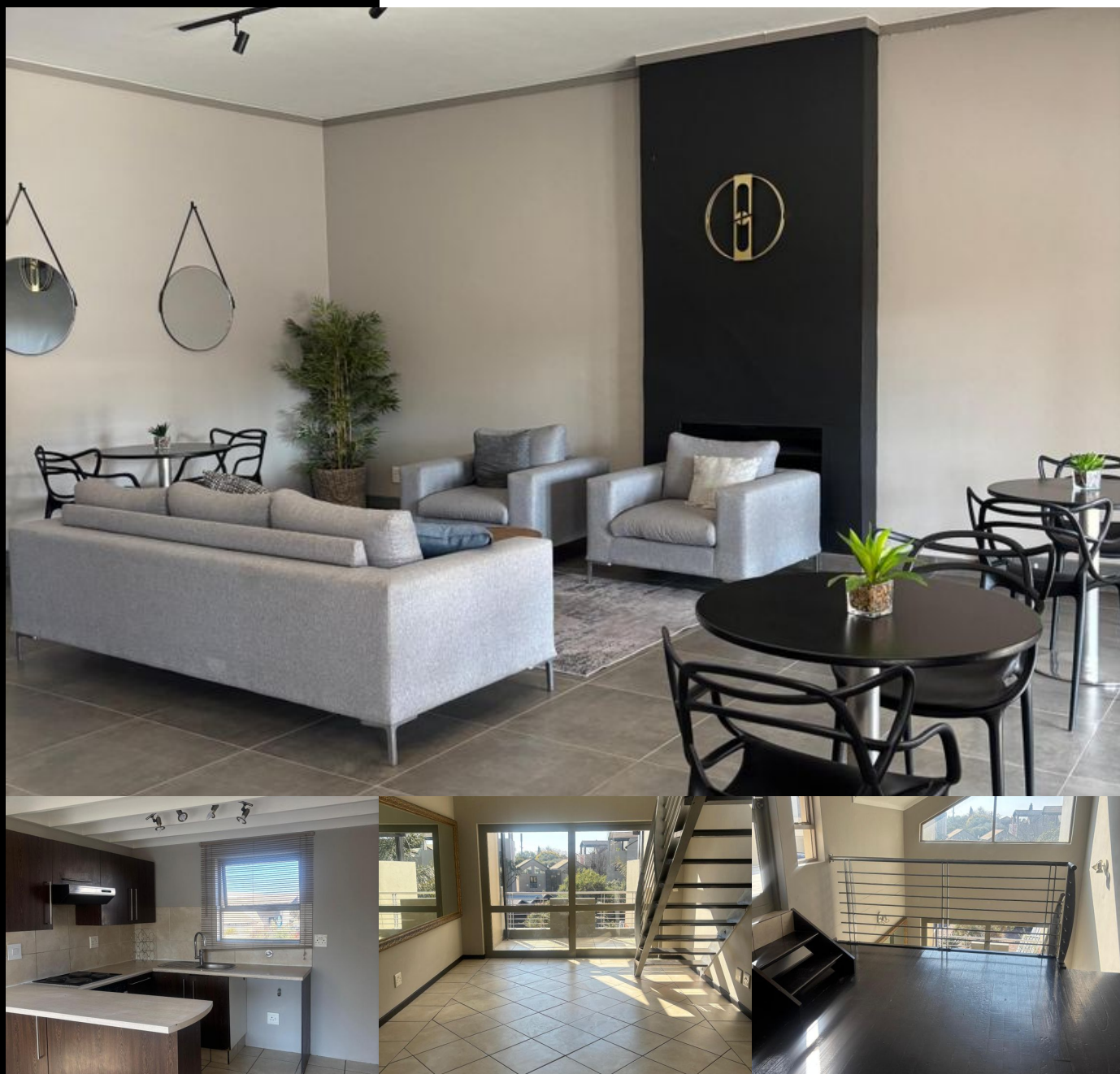


# 13

## Forest Drive *Tinza Lifestyle Estate*



### **Barry Scott-Brown**

Non-Principal Property  
Practitioner  
Registered with PPRA

082 777 2552  
barry@lwp.co.za

# LWP

PROPERTIES

## SECURE LOCK-UP-AND-GO DUPLEX APARTMENT

WEB REF: RL4844

# R995,000

ERF SIZE: 116m<sup>2</sup>

FLOOR SIZE: 116m<sup>2</sup>

RATES AND TAXES: R1,142

LEVIES: R3,420



Inviting buyers between R899 000 and R995 000 to view and negotiate

Step into this stylish and secure apartment, designed for modern living. The lower level offers an open-plan kitchen and living area that seamlessly flows onto a private balcony, perfect for unwinding or soaking up the fresh air.

Boasting double-volume ceilings and large windows throughout, the apartment is filled with abundant natural light, creating a bright and airy atmosphere.

It features two well-sized bedrooms and one full bathroom, with the main bedroom enjoying direct access to the balcony.

Upstairs, you'll find a spacious second lounge that opens onto an expansive entertainer's balcony, offering ample space for hosting guests and enjoying beautiful views.

Set within a well-maintained complex, residents enjoy access to excellent amenities including a clubhouse, tennis court, and a sparkling swimming pool — ideal for an active and social lifestyle.

Conveniently located close to major shopping centres, top-rated schools, and a nearby casino, this apartment offers the perfect blend of lifestyle and location.

Perfect for professionals or small families looking for comfort, convenience, and security in a lock-up-and-go setting.

Whilst every care has been taken in the preparation of this listing, we cannot be held responsible for any errors/omissions which may occur.

