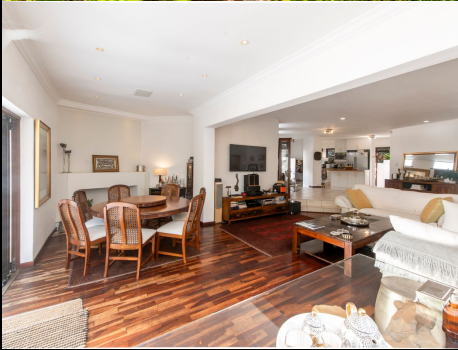


47

Olympus Crescent *Mykonos Estate*



Kris Loffler

Candidate Property Practitioner
Registered with PPRA

067 957 9230
kris@lwp.co.za

Paul Kleanthous

Candidate Property Practitioner
Registered with PPRA

083 239 8983
paul@lwp.co.za

LWP

PROPERTIES

WEB REF: RL4572

ERF SIZE: 543m²

FLOOR SIZE: 212m²

RATES AND TAXES: R2,000

LEVIES: R1,950



ONE OF OUR ABSOLUTE FAVOURITES, AND IT'LL BE YOURS TOO!

R2,950,000

A true gem nestled in a serene setting, this home offers an energy and charm that is incomparable.

Wouldn't it be great to come home to a space that feels like a vacation destination? This home captivates with its charming garden oasis, providing a perfect retreat for relaxation and reflection.

Step inside to discover an open-plan layout that seamlessly connects the living, dining, and kitchen areas, making it perfect for family gatherings and entertaining friends. The wooden floors in the lounge and dining room add warmth and character, creating an inviting atmosphere that makes you feel right at home.

In winter, get cozy next to the gas fireplace. Then, when summer rolls around, cool off by jumping into the pool before you throw a boerie onto the built-in braai so to best enjoy the warm summer days that Joburg has to offer.

Each bedroom is a sanctuary of tranquility, offering ample space and natural light.

This home also includes staff accommodation, complete with its own en-suite bathroom.

More than just a property, this is a home filled with love and positive energy, where cherished memories are made. Don't miss the opportunity to own this picturesque haven. Schedule a viewing today and experience the warmth and charm for yourself!

Whilst every care has been taken in the preparation of this listing, we cannot be held responsible for any errors or omissions which may occur.

