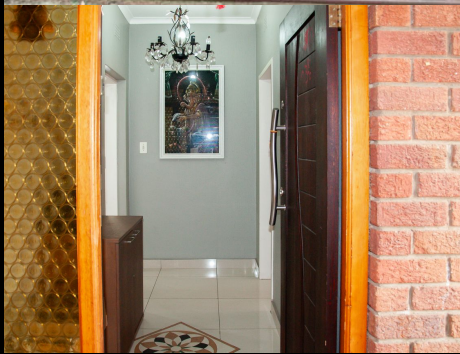


30

Achter Road



Jane Hoar

Non-Principal Property
Practitioner
Registered with PPRA

082 852 2609
jane@lwp.co.za

Barry Scott-Brown

Non-Principal Property
Practitioner
Registered with PPRA

082 777 2552
barry@lwp.co.za

LWP

PROPERTIES

SUMPTUOUS AND SECURE IN PAULSHOF

WEB REF: RL4597

R2,495,000

ERF SIZE: 596m²

FLOOR SIZE: 250m²



4



2



2

This immaculate home is waiting for a new family - step inside and feel the beautiful space.

Tiled throughout the living areas in porcelain and with engineered wood in the bedrooms, this property has been tastefully renovated.

A spacious porch and entrance hall lead you into the home and through to a generous dining area. A luxurious lounge houses a gas fireplace. The sunroom opens via sun-protected stacker doors to the established garden and a pretty pool area beyond. A roomy study could also be used as a fourth bedroom.

The kitchen offers granite worktops, a breakfast bar, two large pantry cupboards and space for a double fridge. The adjacent scullery houses all the appliances and includes loads of storage space and a double sink. This leads out to a large courtyard with a storeroom and staff accommodation.

There are three deluxe bedrooms with built-in cupboards. The master suite is a beautiful room with oodles of cupboards and a dressing area. The en-suite bathroom is luxurious with a large shower, bath and double vanity. The family bathroom also offers a standalone tub, a lovely big shower and a single vanity unit.

With an alarm, external beams and CCTV cameras you'll feel secure. Electric gates and a double automated garage complete this gorgeous home.

Situated on a no-through road and with highway access also close, this property will tick all your boxes. Make an appointment today.

Whilst every care has been taken in the preparation of this listing, we cannot be held responsible for any errors or omissions which may occur.

