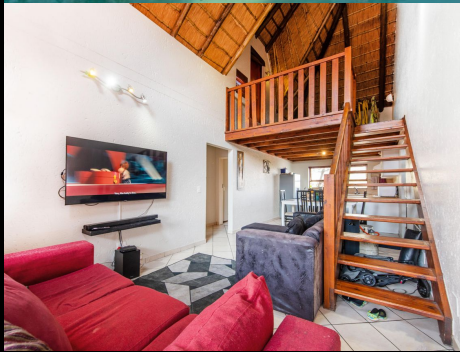


51

Naivasha Road *Savuti Sands*



Jane Hoar

Non-Principal Property
Practitioner
Registered with PPRA

082 852 2609
jane@lwp.co.za

LWP

PROPERTIES

WEB REF: RL3883

ERF SIZE: 108m²

FLOOR SIZE: 108m²

RATES AND TAXES: R856

LEVIES: R3,500



ASKING R849,000

R849,000

Gorgeous Two Bed Loft

Inviting serious buyers to view and negotiate from R749,000

SOLE MANDATE - NEW RELEASE - PRICED TO SELL

This 108-square-metre unit offers all the space you need.

A spacious tiled lounge/diner opens onto a private balcony. The kitchen is open plan with a bar area and plenty of storage.

There are two good-sized bedrooms with laminate flooring and built-in cupboards downstairs - the main one includes a door to the balcony. The bathroom offers a bath and a shower.

Upstairs a mezzanine floor offers space for an office/additional lounge or even a bedroom. The upper patio enjoys space to braai and enjoys a sundowner.

There is great security in this complex and the unit includes 1 covered parking and 1 open space.

The levy amount includes water and domestic effluent.

Whilst every care has been taken in the preparation of this listing, we cannot be held responsible for any errors or omissions which may occur.

